



Intellinova® Standard

Intellinova Standard is distinguished by its great flexibility and ease of use, enabling fast implementation of customer-defined solutions. Accuracy and reliability are also trademarks of this high performance system.

Optimal cost efficiency

Offering optimal cost-per-channel, Intellinova Standard is the ideal condition monitoring solution for installations covering many measuring points. This up to 32 channel-system is appropriate for the vast majority of standard and high-demand applications where measurement is not time-critical, such as paper machines, pumping stations or air handling units. Implementing HD condition monitoring technologies, it is perfect also for low-speed applications, delivering reliable condition data from below 0.1 RPM and upwards.

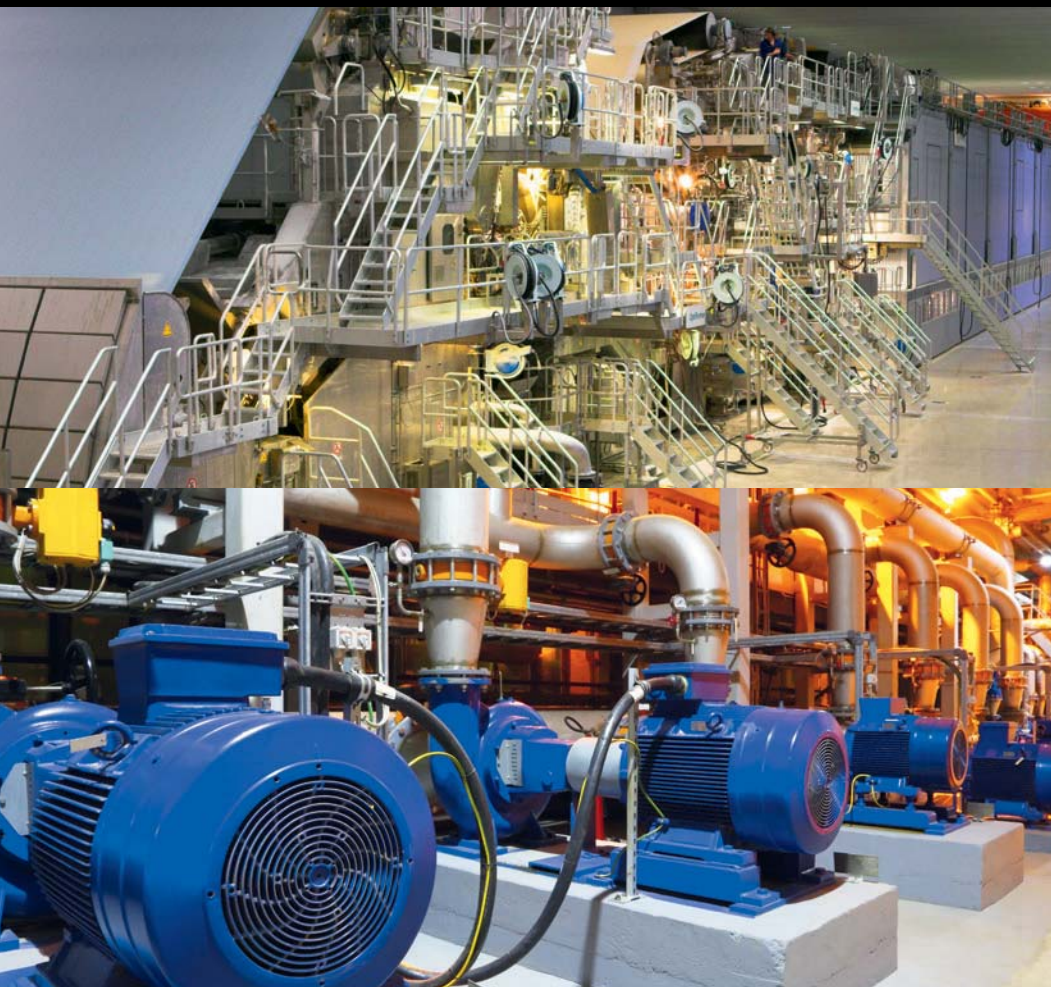
Intellinova Standard is fully compatible with its siblings in the Intellinova family of online systems and can be run in an integrated system or as standalone units.

Rugged system design

Intellinova Standard is a rugged system, made for rough industrial environments and long-term use.

Advanced and highly flexible measurement and alarm management, including conditional and triggered measurement options, ensures that readings are taken only when required. Around the clock, condition information is made available to maintenance staff no matter what their location.

Intellinova Standard is highly scalable and can be tailored to the various needs of many different customers and industries. The system is compatible with other products from SPM and may therefore be integrated with existing solutions.



Typical applications:

- Wire sections
- Press sections
- Dryer sections
- Reel systems
- Pumping stations
- Fans

Powerful measuring techniques

Intellinova Standard implements the most sophisticated and efficient technologies available for monitoring vibration, bearing condition and lubrication:

- HD ENV, high definition vibration enveloping
- SPM HD, high definition shock pulse monitoring
- SPM LR/HR HD, shock pulse measurement method
- Broadband vibration measurement according to ISO 2372 or ISO 10816
- FFT with machine fault symptom evaluation
- User defined measurements via analog inputs or OPC, e.g. pressure, flow, load etc.
- Orbit measurement

Industrial versatility

The system is designed to manage tough industrial environments and complex operating conditions in all industries.

- Wireless solution
- Flexible measurement and alarm management
- Digital and RPM inputs for situation-controlled measurements
- Status outputs for alarm indication
- OPC communication for import and export of process parameters

Characteristics	Commander Unit	Cabinet	Portable	Rack
Dimensions	390x207x 40 mm (15.4 x 8.2 x 1.5")	500 x 600 x 210 mm (19.7 x 23.6 x 8.3")	500x600x210 mm (19.7 x 23.6 x 8.3 in)	482x132 (3U) x365mm (19 x 5.2 (3U) x 14.4 in)
Measuring channels*	max. 32			
Analog inputs	4			
Digital inputs (RPM)	4			
Digital outputs	2 status + 4 user configurable			

*) Both vibration and shock pulse measurements can be performed using DuoTech accelerometers.